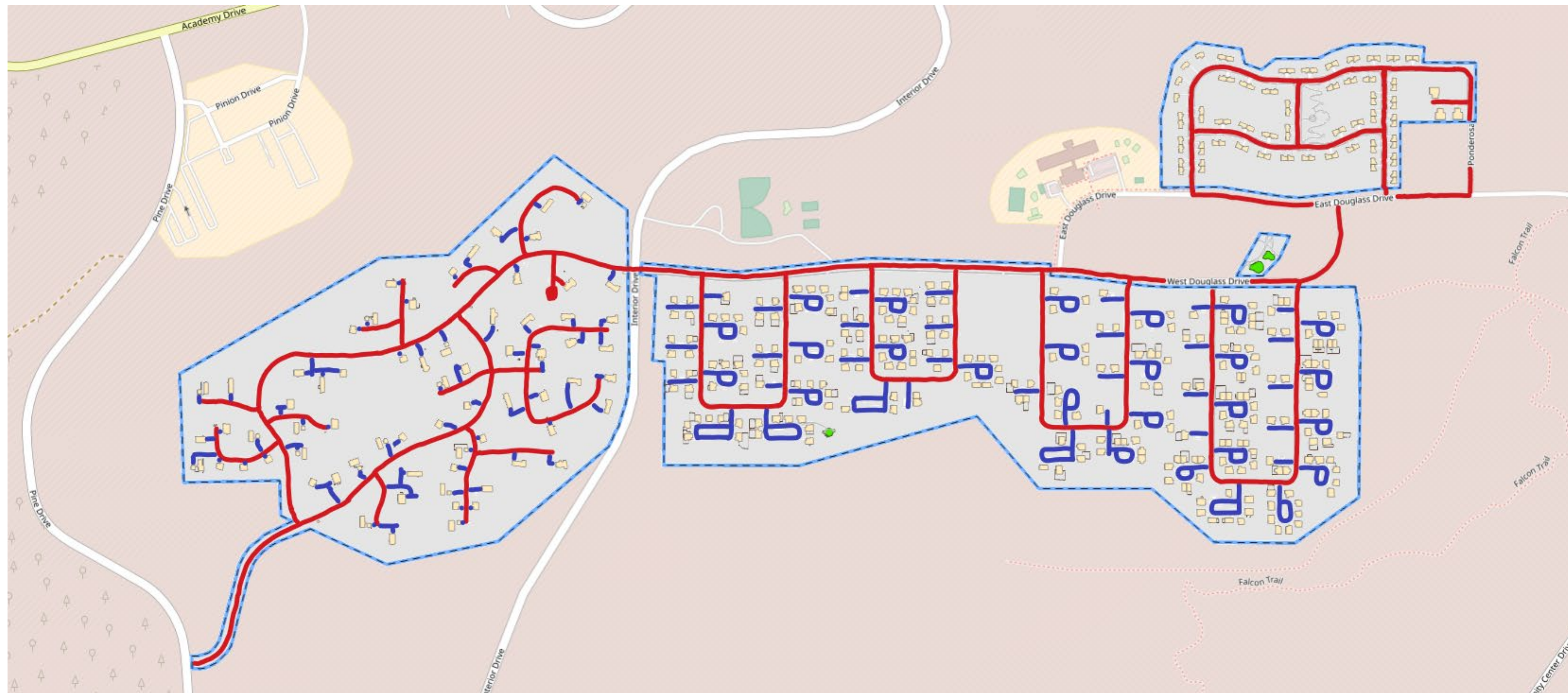




ONE MISSION. ONE COMMUNITY.

**Air Force Academy Military Communities
Snow Operations 2023 - 2024**

Priorities & Map: Douglass Valley



Priority 1 **(Red)**:

- Main Roads & K&E personnel

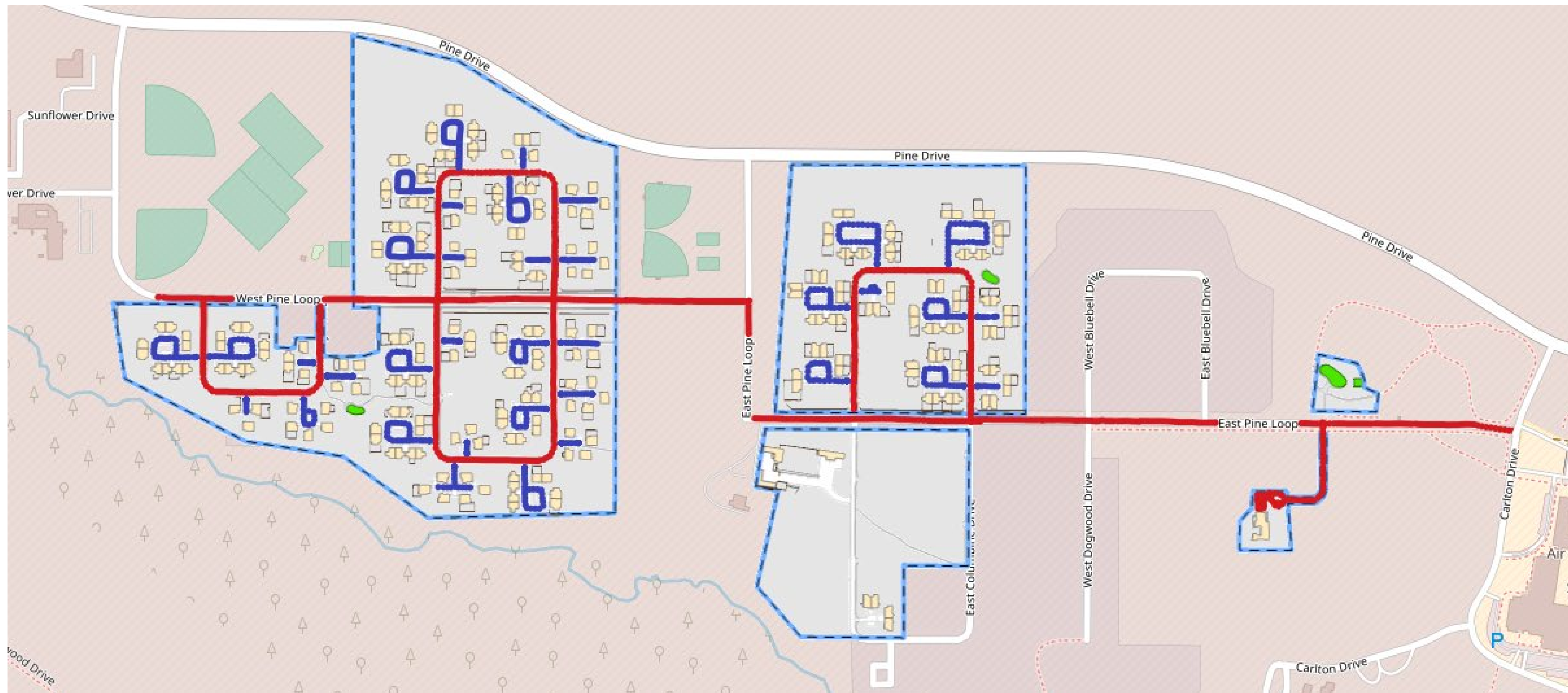
Priority 2 **(Blue)**:

- Clusters, Sidewalks and Bus Stops

Priority 3:

- Mailboxes and Deployed Spouses

Priorities & Map: Pine Valley



Priority 1 (Red):

- Main Roads & K&E personnel

Priority 2 (Blue):

- Clusters, Sidewalks and Bus Stops

Priority 3:

- Mailboxes and Deployed Spouses

Road & Sidewalk Crew Priorities

- One (1) plow truck and one (1) sidewalk unit will deploy into Pine Valley
- One (1) plow truck with sander will deploy into Upper Douglass Valley
- One (1) plow truck with sander, one skid steer, and a sidewalk unit will deploy into Main Douglass Valley and North Douglass Valley (MilCon)
- After all plows and skid have completed their Priority 1s they will move to clusters in their respective areas
- Sanding will occur during and at the end of each snow storm as needed on all roadways
- All sidewalks will be maintained through out the storm
 - They will then move to bus stops, Deployed Spouses, and mailboxes
 - Ice melt will be put down on sidewalks where needed

Personnel & Equipment

- **Personnel**
 - 5 to 8 Operators (dependent on conditions)
 - Summer workers recalled as demand increases
- **Equipment**
 - 3 plow trucks with 2 sanders
 - 2 skid steers with 10' pushers
 - 2 John Deere UTV with plow
- **Materials**
 - Ice Slicer: 25 tons on hand
 - 24 hour turn for re-order

Snow Storm Plan of Actions

- **Pre-Snow Event (24 Hours before event)**
 - Checking/Staging equipment
 - Pretreating Roads/Parking Lots (if required)
- **During Snow Event**
 - Snow removal begins once accumulation is 2"
 - Once snow accumulation reaches 1", HMC will activate Embassy Site Management
 - Removal commences in Douglass Valley and Pine Valley
 - Two crews for Douglass Valley and one crew for Pine Valley
 - Ice slicer is applied to all main roads/steep driveways/clusters (if required)
 - Snow removal operations continues until all areas are clear

Snow Storm Plan of Actions

- **Post Snow Event (24hrs+ after event)**
 - Regular site checks continue for any post event drifting or ice accumulation/melting
 - Reconstitute/repair snow equipment